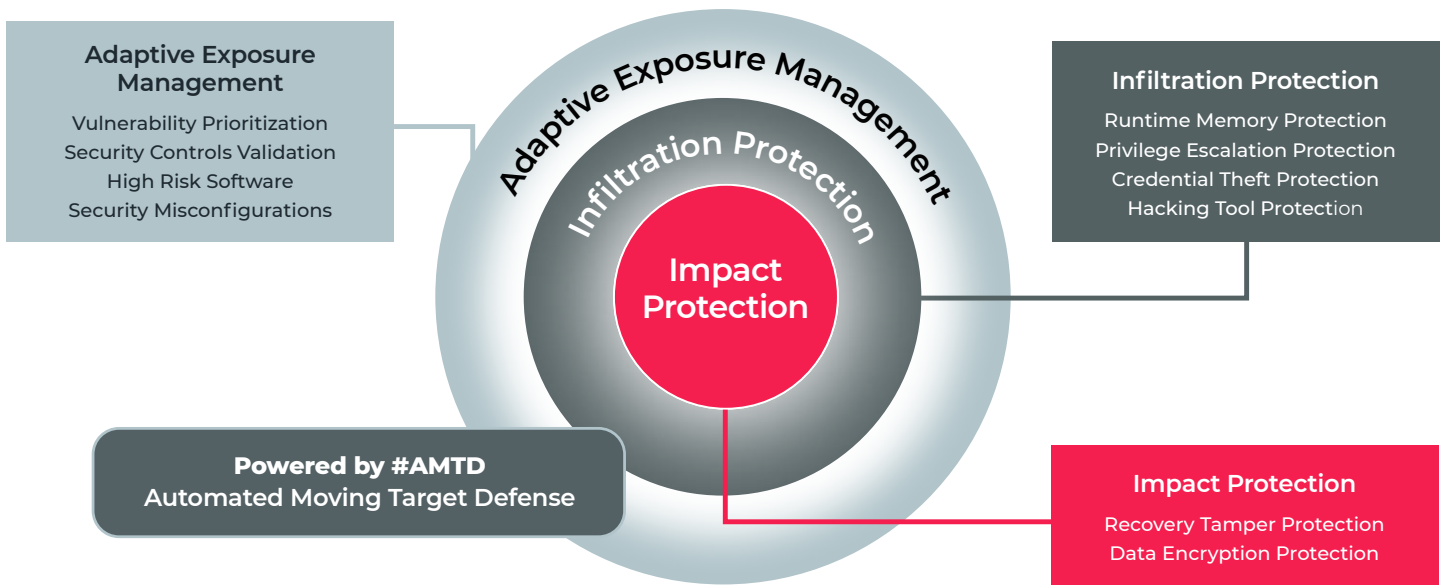


Anti-Ransomware Assurance Suite

Morphisec fortifies your organization by diminishing the blast radius of attacks, to preemptively reduce the organization's exposure to cyber risk, pro-actively prevent advanced threats, and ensure optimal anti-ransomware defense. Powered by **Automated Moving Target Defense (AMTD)**, this streamlined solution effortlessly integrates with your current endpoint protection array, enhancing existing protection capabilities or standing strong independently when necessary.



Morphisec is a cloud delivered , operationally efficient solution that prevents advanced threats without additional staffing or performance impact.



Adaptive Exposure Management

Elevate your security posture with Adaptive Exposure Management that prioritizes vulnerabilities, automates the assessment of your security controls, identifies high-risk software, and addresses security misconfigurations.



Infiltration Protection

Enhance your cybersecurity resilience with Morphisec's prevention-first technology that continually changes the attack surface, rendering the target unpredictable, making it harder for attackers to exploit vulnerabilities.



Impact Protection

Augment your cybersecurity with dedicated Anti-Ransomware protection that proactively defends critical assets and data with a prevention-first strategy, minimizing recovery times and strengthening your anti-ransomware stance.

Benefits



Assurance: Gain peace of mind, knowing you're protected even when other safeguards fail, ensuring uninterrupted cyber defense.



Total Cost of Ownership (TCO): By preventing threats as early as possible and classifying them accurately, Morphisec significantly reduces the time and costs for tech resources as well as the financial impact.



Enhanced Visibility: Morphisec sheds light on shadow IT, misconfigurations, and high-risk software, revealing critical issues that may have gone undetected, thus mitigating potential impacts on your organization.



Defense-in-Depth: The implementation of AMTD provides a multilayered defensive approach that enhances cyber-resilience against unknown evasive threats.



Improved Cybersecurity Posture: Morphisec boosts audit scores and helps in achieving compliance, which can contribute to reduced cyber insurance premiums, thus enhancing the overall cybersecurity posture.



Operational Readiness: Morphisec enhances team efficiency and effectiveness by eliminating attack dwell time and recovery efforts through proactive prevention. System hardening and virtual patching free up resources, allowing teams to concentrate on critical tasks instead of routine patching.

“Automated Moving Target Defense is an emerging game-changing technology for improving cyber defense.”

Gartner

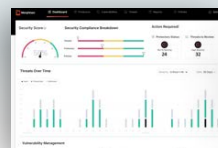
Contact

303 Wyman Street
Suite 300
Waltham, MA 02451
Phone: 1-617-826-1212

Website: www.morphisec.com
Email: marketing@morphisec.com
<https://www.linkedin.com/company/morphisec>
<https://twitter.com/morphisec>

See Morphisec in action

Experience advanced anti-ransomware, threat prevention, and vulnerability prioritization



[Get a Demo](#)

To learn more, visit morphisec.com/demo