



> DATASHEET

# Threat Intelligence Platform (TIP)

Aggregate, Analyze, and Act on Threat Intelligence Data

## Introduction

Cyble's Threat Intelligence Platform (TIP) empowers organizations to efficiently manage and operationalize threat intelligence data. Designed to enhance security operations and decision-making, Cyble TIP provides a centralized hub for managing intelligence, reducing risks, and strengthening cybersecurity strategies.

## Key Benefits



### Enhanced Threat Visibility:

Gain a centralized view of diverse threat intelligence feeds for a holistic understanding of potential threats.



### Faster Response Times:

Accelerate detection and mitigation through operationalized intelligence workflows.



### Improved Efficiency:

Automate manual processes, freeing up analyst time for critical tasks.



### Better Collaboration:

Facilitate inter-team workflows with shared intelligence resources.



### Actionable Insights:

Empower security teams with enriched, context-rich threat intelligence.

# | Key Capabilities

## » Centralized Intelligence Management

- » Aggregate threat intelligence from internal, commercial, open-source, and community feeds.
- » Supports feeds in CSV, JSON, URL, and RSS formats.
- » De-duplicate and normalize data to maintain high-quality intelligence.
- » Tag and create custom IOCs, perform complex searches, and save search presets.
- » Apply watchlists to monitor critical IOCs.

## » Threat Library

- » Bundled with Cyble Vision Threat Intelligence Service.
- » Feed sources include ISAC, MISP, AlienVault OTX, Rapid7, VirusTotal, Cyble, and Cyble Premium.
- » Supports TAXII integration for seamless data sharing.
- » Source-specific confidence and risk scoring configurations.
- » Feed Connectivity Healthcheck Alerts.

## » Integration with Security Ecosystem

- » Real-time integration with SIEM and SOAR tools through TAXII.
- » Enable automated workflows and intelligence sharing for faster response.

## » Advanced Analytics and Scoring

- » Prioritize threats based on severity, confidence level, exploitability, Traffic Light Protocol (TLP), and organizational relevance.

## » Collaboration and Sharing

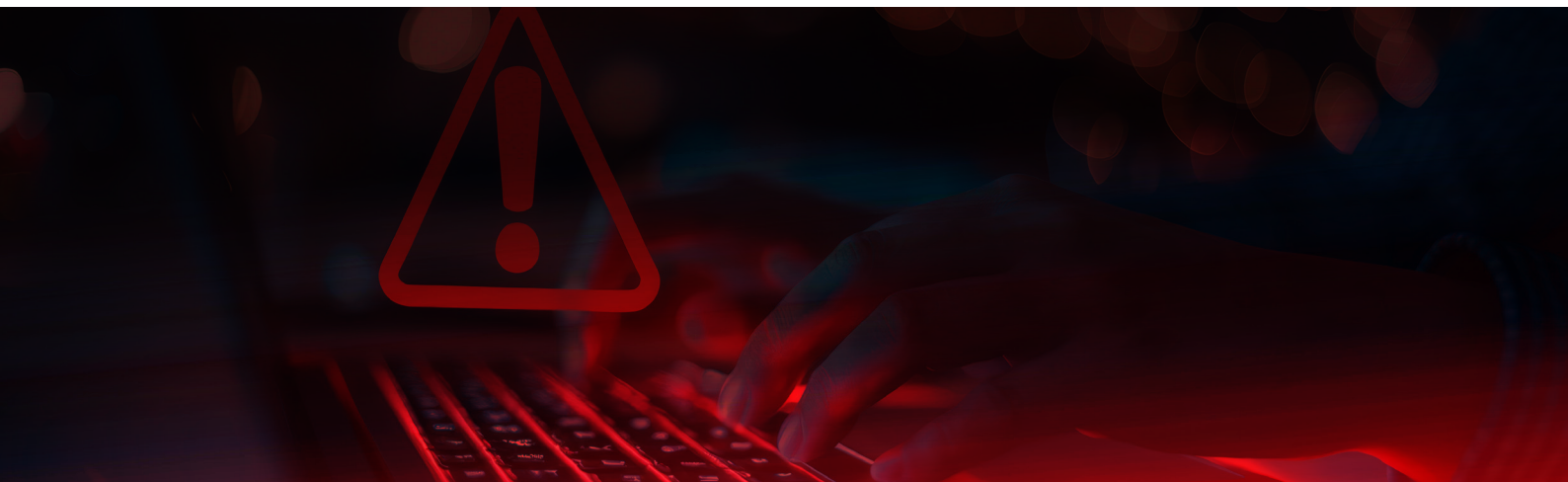
- » Export threat actor profiles, malware families, and IOCs in CSV, JSON, or STIX formats.

## » Correlation and Enrichment

- » Automatically map IOCs to threat actors and malware families.
- » Enrich intelligence with newsfeeds, advisories, TTPs, and hunting rules (e.g., YARA, Sigma).

## » IOC Decay Management

- » Active IOC lifespan: 180 days (deprecated after inactivity).
- » Automatic deletion: 365 days post-ingestion.



## Technical Specifications

- **Deployment Options:**  
Cloud-based.
- **Integration Support:**  
Access API and STIX/TAXII.
- **Data Sources:**  
Cyble, commercial feeds, open-source intelligence, internal data, and community feeds.
- **Compliance:**  
GDPR, ISO/IEC 27001, and other relevant industry standards.

## Use Cases

- **Threat Hunting:**  
Leverage enriched intelligence for proactive threat detection and mitigation.
- **Incident Response:** Improve response workflows with integrated real-time intelligence.
- **Vulnerability Management:** Prioritize remediation efforts based on threat relevance and associated risk levels.
- **Security Automation:** Automate threat intelligence ingestion and response processes.

## How It Works

- 1 Discover**  
Continuously scan and aggregate threat intelligence data to provide a comprehensive view of potential risks.
- 2 Analyze**  
AI-powered tools scrutinize data for vulnerabilities, misconfigurations, and exposure points.
- 3 Detect**  
Real-time alerts for vulnerabilities, newly discovered IOCs, and potential risks allow for swift action.
- 4 Mitigate**  
Actionable context and recommendations enable organizations to proactively defend against cyber threats.



Scan the QR code to get a quick personalized demo of our AI-powered Threat Intelligence platform in action!

### See Cyble in action

<https://cyble.com/request-demo/>  
[www.cyble.com](http://www.cyble.com)

### About Cyble | The leader in External Cybersecurity

Cyble Inc. is a cybersecurity company specializing in dark web monitoring and threat intelligence services. Cyble leverages proprietary AI-based technology to help enterprises, federal bodies, and individuals stay ahead of cybercriminals. The company is known for its expertise in tracking cyber threats, data breaches, and other malicious activities.



### Get in touch with us today

[contact@cyble.com](mailto:contact@cyble.com) | +1 888 673 2067

© 2025 Cyble Inc. All rights reserved.